



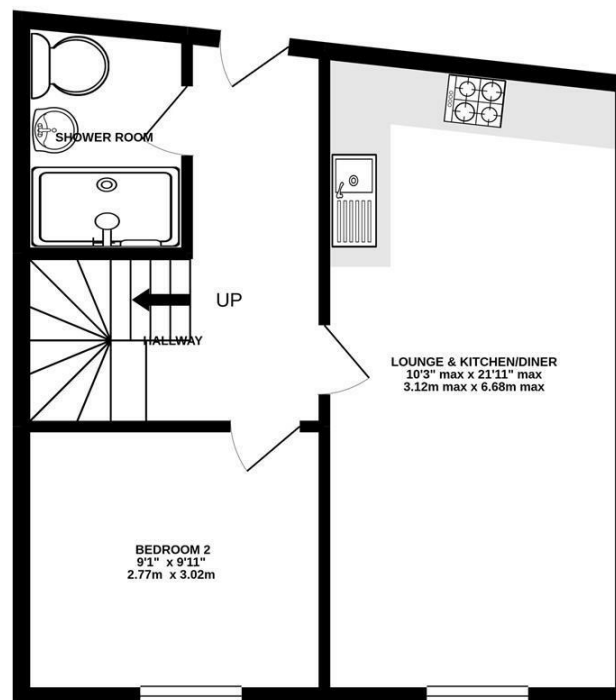
Spilt Level Conversion Apartment with No Onward Chain within Newcastle City Centre! This well presented apartment is ideally located in Charlton's Bonds on Waterloo Street, within Newcastle's City Centre. Charlton's Bonds, originally constructed as a warehouse in circa 1886, has been sympathetically converted into conversion apartments in 2017. Waterloo Street is perfectly placed just off Westgate Road, providing easy access to Newcastle's Central Station, countless superb restaurants, cafes, pubs, bars and a varied range of cultural activities are also just a short walk away.

Split over the second and third floor and boasting over 800 Sq ft, the internal accommodation briefly comprises: Communal entrance hall with secure telephone entry and stairs to all floors; entrance hall; 21ft lounge diner, open to kitchen area with fitted wall and base units together with work surfaces; bedroom two; shower room complete with three piece suite. To the first floor, a delightful bedroom measuring close to 16ft, with En-suite shower room and separate storage cupboard. Positioned within an excellent location, an internal inspection is essential.

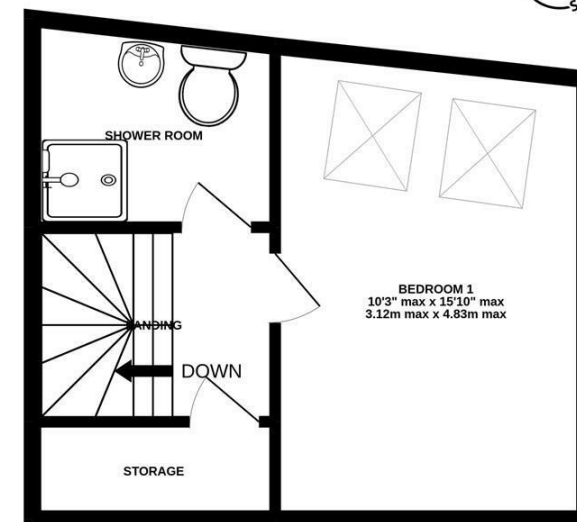
2nd & 3rd Floor Conversion Apartment | Two Bedrooms | 21ft Lounge Diner & Kitchen Area | Shower Room & En-Suite Shower Room | Electric Heating | Double Glazing | Excellent Location | EPC: E



2ND FLOOR
441 sq.ft. (41.0 sq.m.) approx.



3RD FLOOR
295 sq.ft. (27.4 sq.m.) approx.



TOTAL FLOOR AREA : 736 sq.ft. (68.4 sq.m.) approx.

Whilst every attempt has been made to ensure the accuracy of the floorplan contained here, measurements of doors, windows, rooms and any other items are approximate and no responsibility is taken for any error, omission or mis-statement. This plan is for illustrative purposes only and should not be used as such by any prospective purchaser. The services, systems and appliances shown have not been tested and no guarantee as to their operability or efficiency can be given.
Made with Metropix ©2021

Offers Over £165,000

IMPORTANT NOTE: These particulars and the descriptions and measurements herein do not constitute representation and whilst every effort has been made to ensure accuracy, this cannot be guaranteed.

